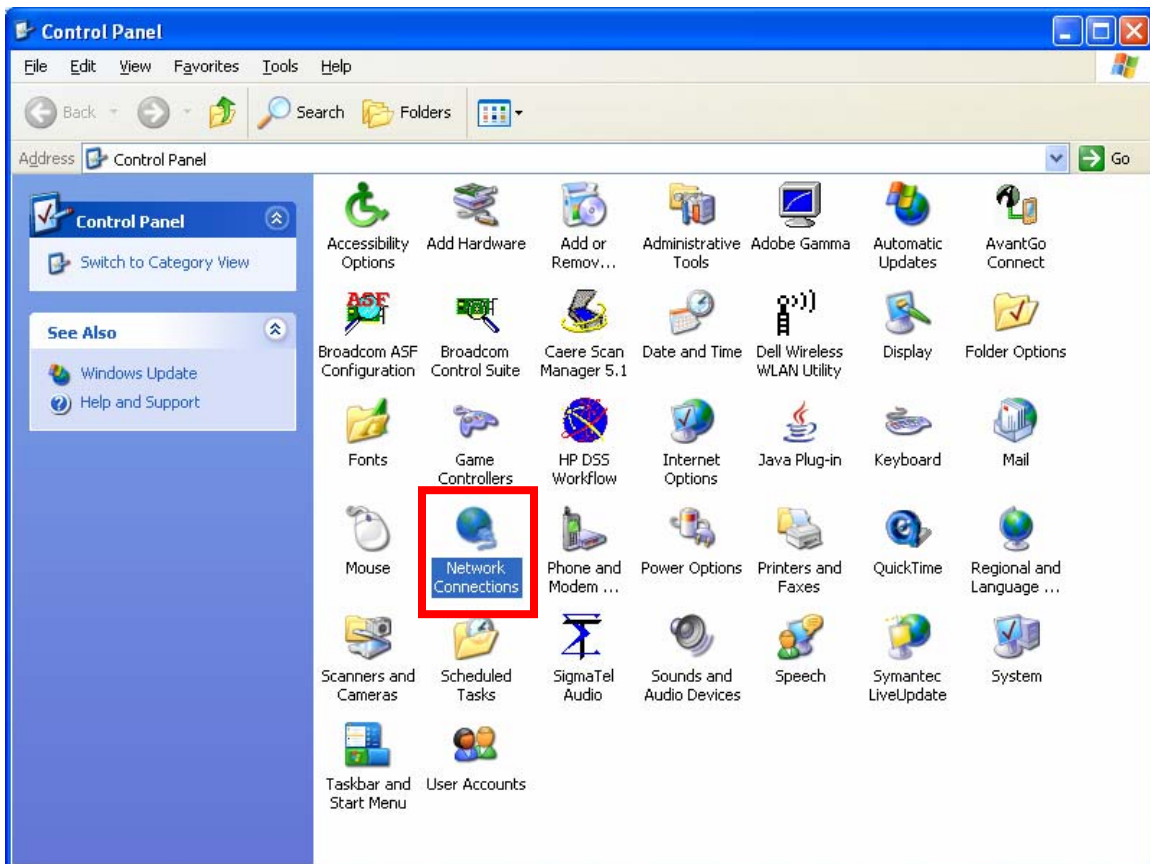


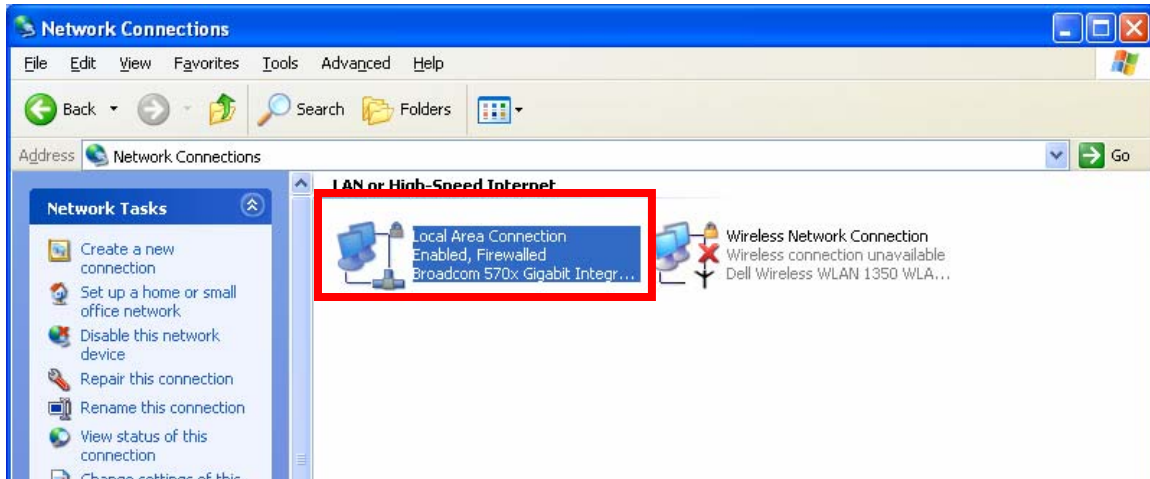


How to Turn On the Windows XP Firewall in Windows XP Service Pack 1

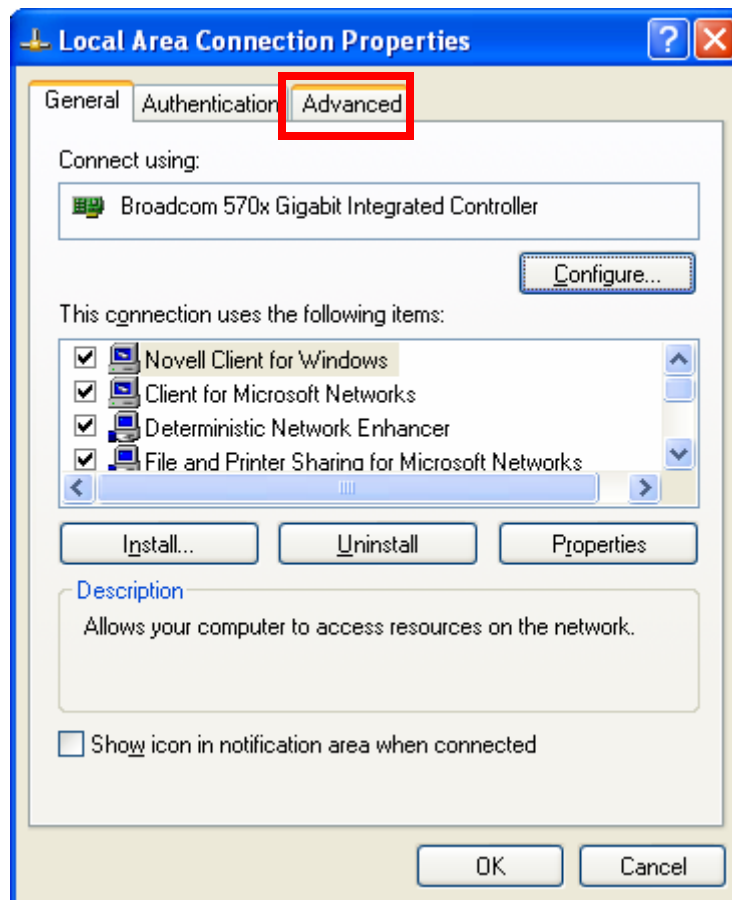
1. Go to the START menu on your computer and then navigate to where you can select and open the Control Panel.
2. Once the Control Panel is open, like the one below, locate the icon for the *Network Connections*. Double-click this icon to open the Network Connections management window.



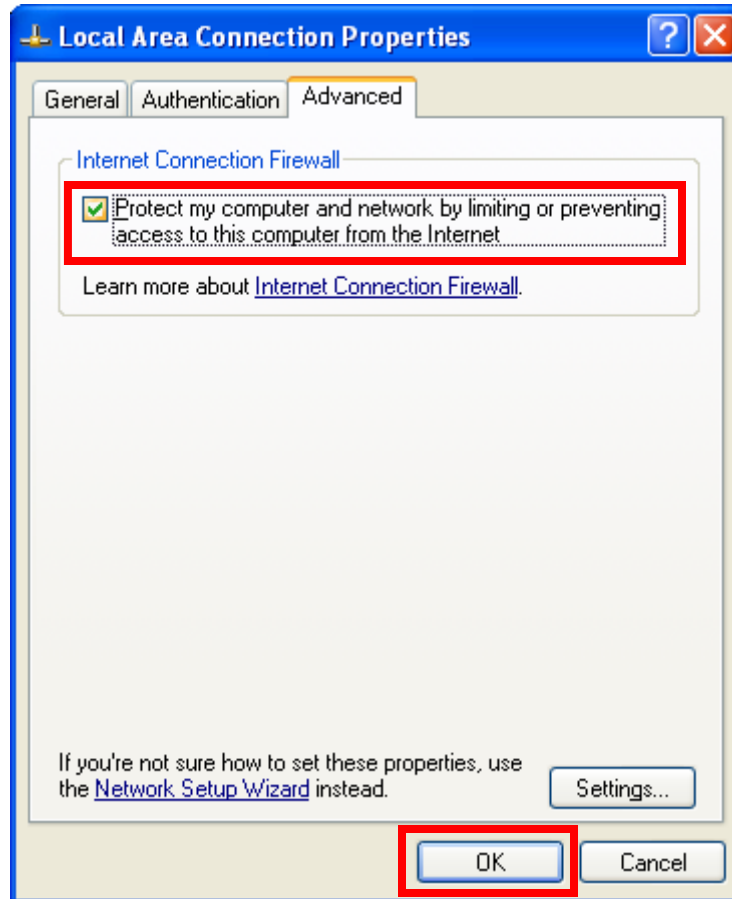
3. Once you are in the Network Connections management window, right-click on the icon that is marked: Local Area Connection, and select 'Properties' from the pop-up menu.



4. This will open the Properties Dialog Box for that connection type (you will want to set the firewall up for *each* of the connections you see in the Network Connections management window). Click on the **Advanced** tab.



5. Mark the check-box that says: Protect my computer and network by limiting or preventing access to this computer from the Internet. This will turn the built-in firewall on.



6. Click on the OK button to save your changes. Repeat this process for each of the connection types shown in the Network Connections management window.
7. Congratulations your Windows XP built-in firewall is now active.