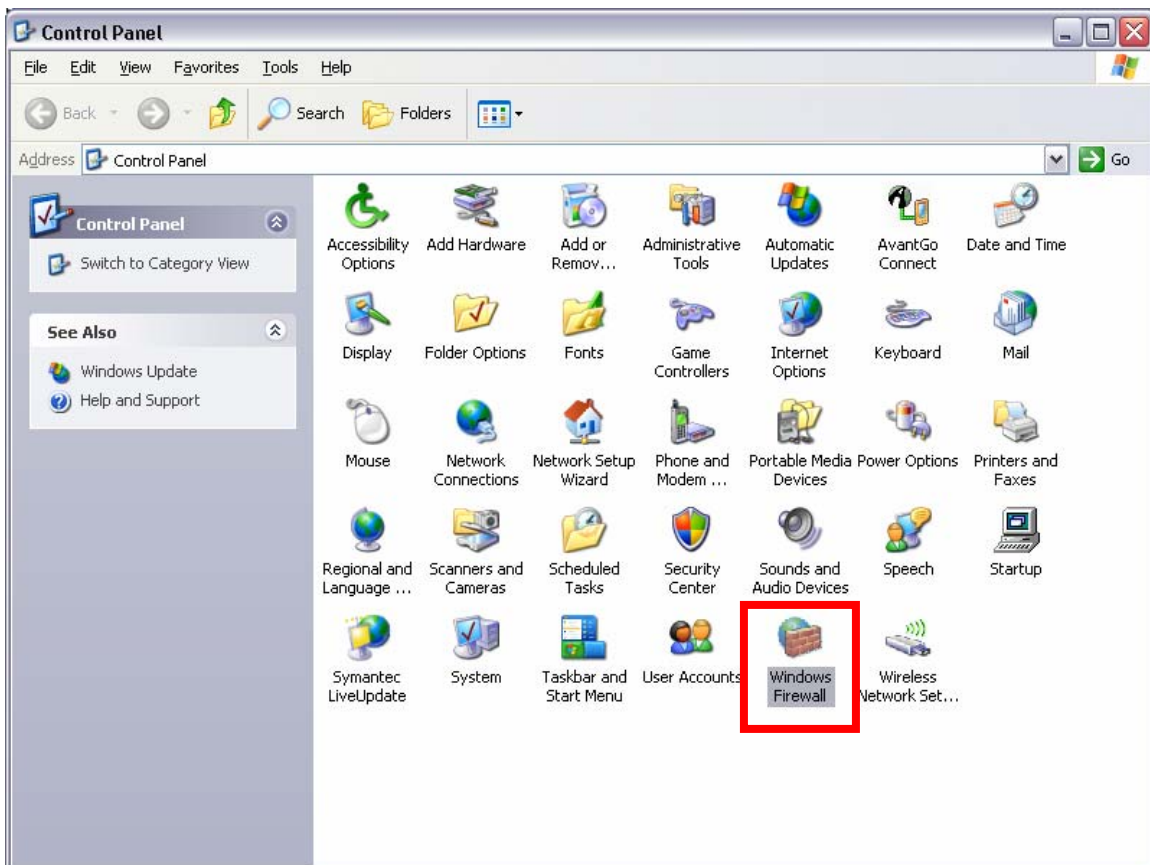
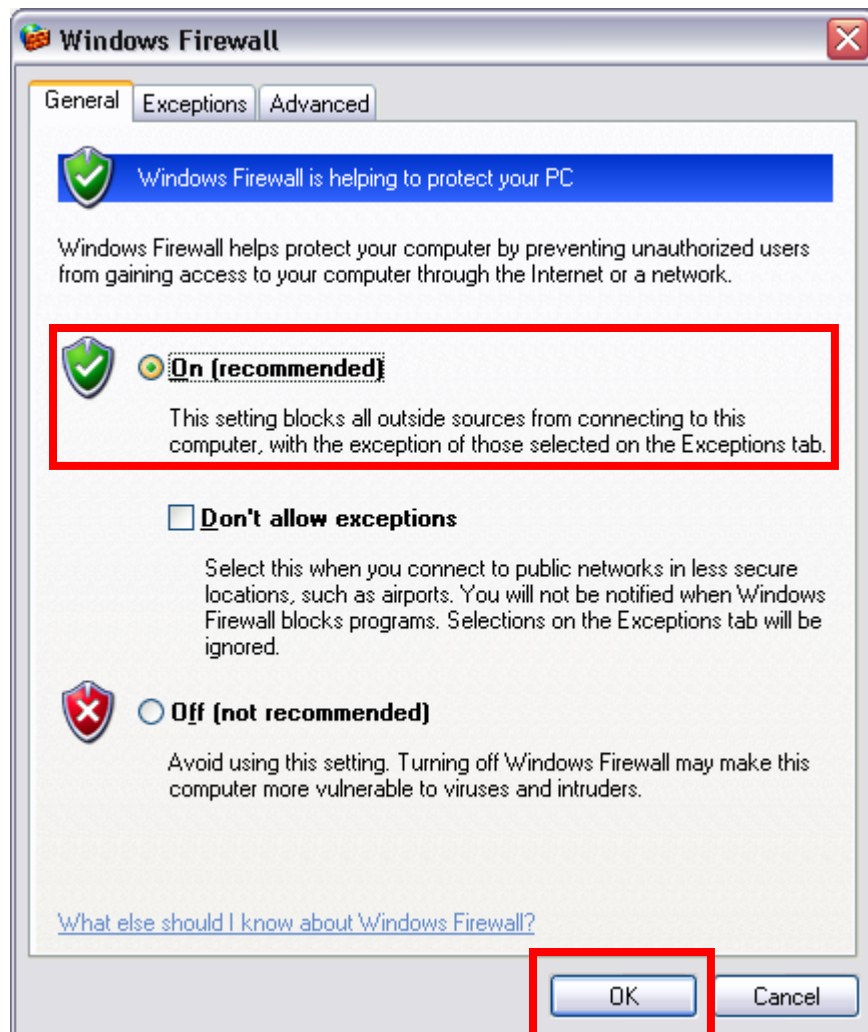


How to Turn On the Windows XP Firewall in Windows XP Service Pack 2

1. Go to the START menu on your computer and then navigate to where you can select and open the Control Panel.
2. Once the Control Panel is open, like the one below, locate the icon for the *Windows Firewall*. Double-click this icon to open the Windows Firewall dialog box.



3. Once the Windows Firewall dialog box opens up, simply click the radio button option in front of the text that reads: "On (recommended)." This will turn your firewall on. Click the OK button at the bottom of the window to finish.



4. Congratulations your windows firewall is now active!