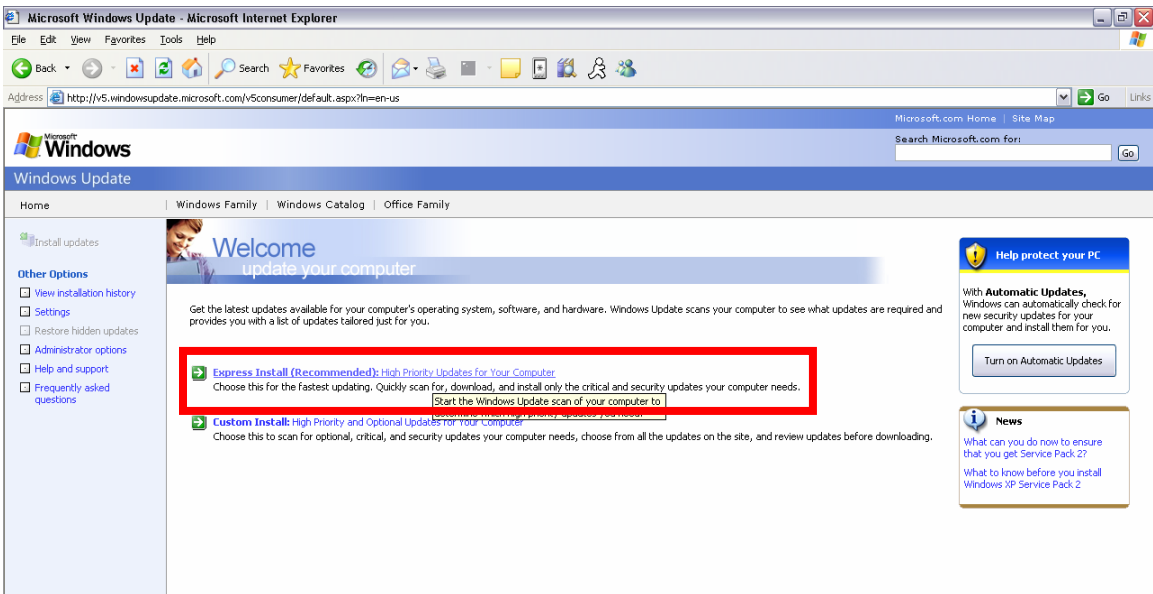




Using Microsoft Windows Update Instruction Sheet

1. Open up Internet Explorer and enter the URL for the Windows Update website: <http://www.windowsupdate.com>.

If this is your first visit to the site, you will be prompted to validate your software as being a genuine Microsoft product before you will be able to use this tool. Download and install the ActiveX component to do this before proceeding.

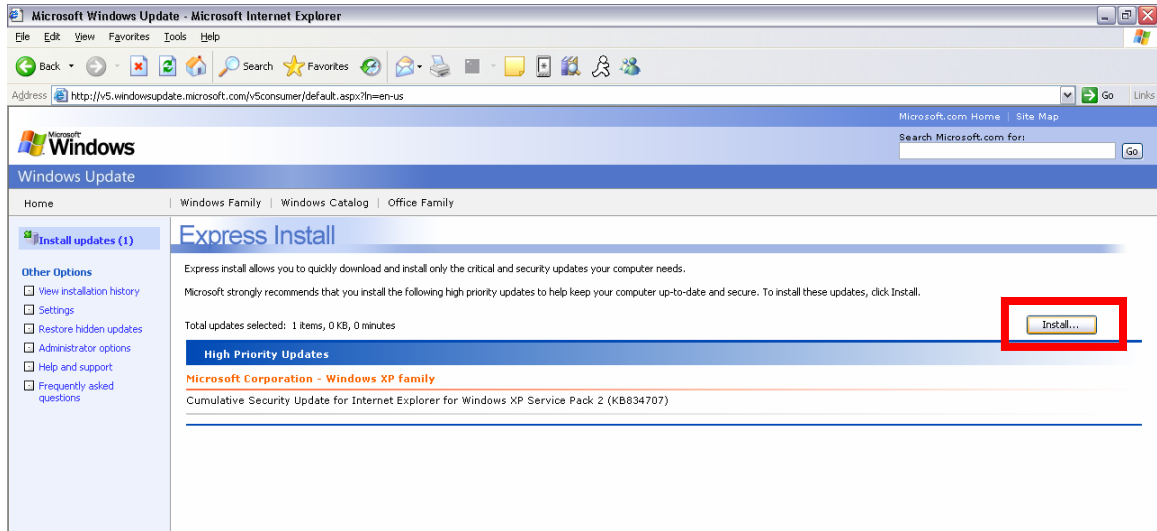


2. Click on the “Express Install” option to begin the scan and installation of any needed updates or patches for your computer.

You may use the “Custom Install” option if you are comfortable with determining which updates and patches should be installed and which you can do not need – and that their absence will not cause a security problem on the campus networks.

3. After Microsoft finishes scanning your computer, if there are any updates available click on ‘Install’.

You may get a dialog box for a license agreement. Click ‘Yes’ or ‘OK’ to confirm your acceptance and continue the installation process.



4. If you are asked to restart, do so at this time.



5. Repeat this process from Step 1 until there are no remaining updates left to download and install. You may need to do this because some updates can only be installed one at a time with a restart in between each update.
6. Once you have run out of updates to install, your computer is up to date!